

LCN-PCHK

Couple software for LCN

Functional Description:

The LCN-PCHK is a program to communicate between the PC coupler and user program.

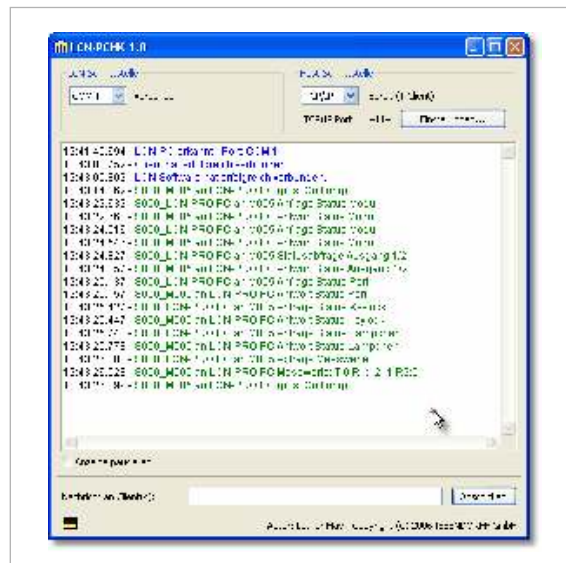
It supports two communication protocols:

- RS232
- TCP/IP

Through the RS232 interface (com) a host coupling is realized.

Through TCP/IP (Ethernet/Internet) LCN-W, LCN-PRO or a 3rd party software program can access the LCN-Bus simultaneously.

The PCK - Protocol is available for coupling the LCN-Bus to another software and system. Here the second interface (RS232) or the network (TCP/IP) to couple a 3rd Party software is used.



Field of application:

With the couple software LCN-PCHK a TCP/IP coupling between the LCN Bus and the LCN software is realized.

Likewise the software is used for coupling the LCN Bus to 3rd Party systems.

These can be e.g: 3rd Party visualisation systems, management systems, HVAC control or fire alarm systems.

Technical Data:

Computer:

Processor:	Min 233MHz
RAM:	64 MB
Hard disk:	2 MB
Operating system:	Windows 2000, XP, XPx64, Linux in development
Interface:	RS232 (Seriell), USB (Adapter) TCP/IP (Ethernet/Internet) additional RS232 in host mode emulation possible

Licence:	Full version =1 connection Upgrade = extra connections (LCN-PCHKL)
----------	--

Note:

In order to communicate with the LCN modules, a PC couple module LCN-PK is needed.