

LCN-PRO

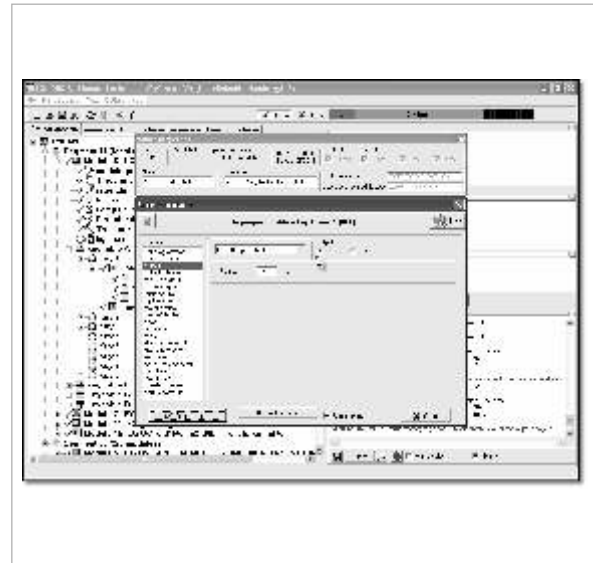
LCN Programming Software Windows-based

Functional Specifications:

The LCN-PRO is based on a data base (project data) where the programming (setting of parameters) for the LCN modules is placed and stored.

The LCN-PRO can programme as many projects as requested. Each project gets its own project data base. With the LCN-PRO it is possible to cut, copy and paste parameters, useful for keytables where the same data can be used again or even for entire modules.

When offline, the set parameters are placed in the project data base. On setting up a connection to the LCN system, they are then transferred over to the corresponding modules. When online, all changes are transferred to the data base and the corresponding LCN module is then programmed.



Field of application:

LCN-PRO is the Windows-based LCN software for programming LCN modules. Apart from setting parameters the software controls for errors and protocol functions for the LCN system.

The software has two modes, online and offline. In the offline modes the system is pre-configured and placed in a data base. Later, when a connection is established the parametrization is transferred to the project.

The user can set up standard programming and put it into a library and place it at will via "Drag" and "Drop" into LCN systems.

Technical Data:

Computer:

Processor:	min. 500Mhz (or higher)
Main memory:	min. 64 MB
Hard disk:	min. 3 MB
Resolution:	VGA min. 800 X 600 Pixels
Entry system:	standard keyboard, mouse
Operating system:	Win9x, 2000 or XP
Interface:	Rs232, TCP/IP, USB (adapter)

Note:

In order to allow communication with your LCN modules, you also need the PC coupling module in addition to the LCN software.