

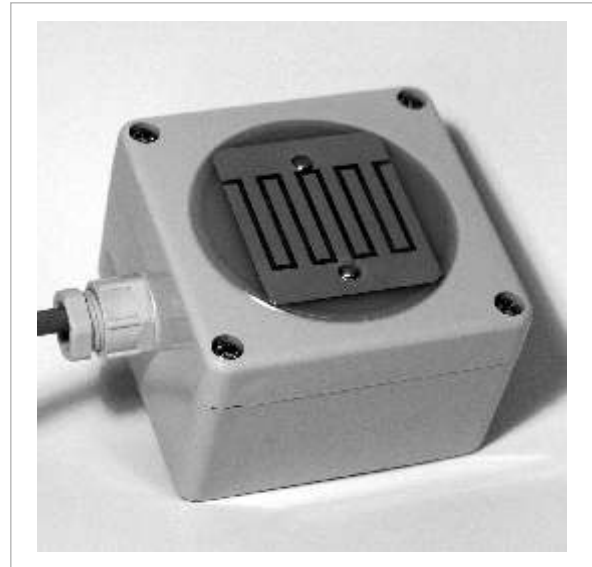
LCN-RS

Rain Sensor

Functional Specifications:

The LCN-RS rain sensor calculates the resistance measured between the two metal contacts of the sensor. One rain drop between the two contact fields changes the resistance and a potential-free contact is closed.

The LCN-RS is a sensor, it needs to be connected to a converter (B8H) and an intelligent bus module in order to process the data. These must be ordered separately.



Description:

The LCN-RS is a rain sensor. It must be connected to an intelligent bus module via a Binary sensor (B8H) in order to process the data.

The case is weather proof (IP 65) and has the necessary assembly kit for wall and pylon fixture. The sensitivity of the rain sensor is adjustable via a built-in potentiometer.

Field of application:

Upon the onset of rain immediate action of rain-sensitive facilities can be carried out i.e windows and roof lights closed etc.

The programming of the corresponding function is carried out in the LCN bus module.

Note:

The LCN-RS needs a LCN-HU or LCN-SH+ and a binary input (LCN-B8H) for operation .

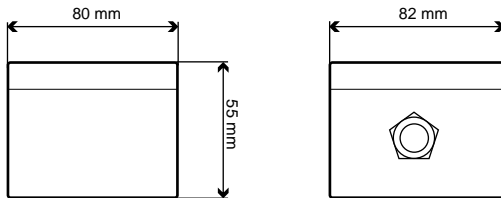
The rain sensor should be cleaned regularly. Therefore, it is to be installed in a way that the user can easily reach it.

LCN-RS

Rain Sensor

Measurements:

Dimensions (L x W x H): 80 mm x 82 mm x 55 mm



Technical Data:

Connection:
 Power supply: 230V~ ±15%, 50Hz
 Current: 120mA, internal consumption 80mA
 wiring option: for screwing
 Conductor type: massive or multi-phase (max. 1,5mm²) or with insulated pin terminals (max. 1,5mm²)

Circuit power relays: 230V / 3A
 Connection length: max. 100m

General Details:
 Operating temperature: -10°C to +40°C
 Humidity: max. 80% rel., no condensation

Environmental conditions: stationary installation according to VDE 632, VDE 637

Safety classification: IP 65

Assembly:

Circuit Diagram

